

Marunouchi extends a warm welcome to 22nd IUNS-ICN participants!

Marunouchi is a sophisticated district at the heart of Japan that extends between Tokyo Station and the Imperial Palace.

This page provides suggestions on how to enjoy your time in Marunouchi.

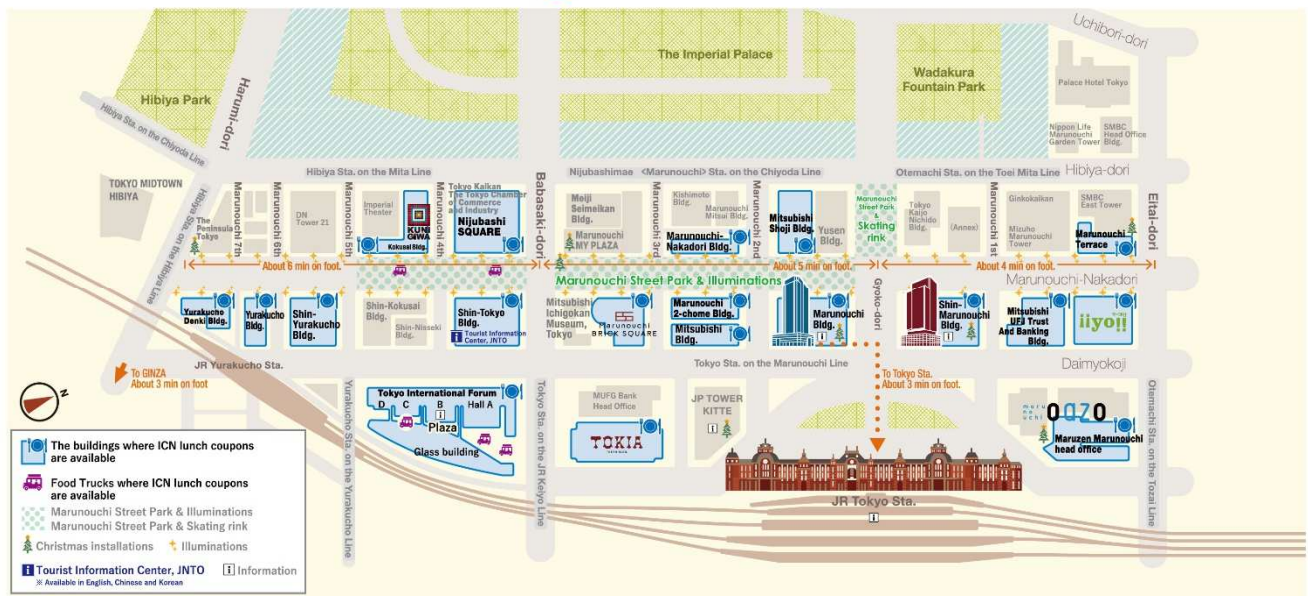
When you have free time, be sure to explore this cultured area and everything it has to offer, including an abundance of nature at the Imperial Palace, high-rise buildings, five-star hotels, restaurants, and museums—all within walking distance.

Lunch coupons

The lunch coupons presented to ICN participants can be used at over 300 restaurants and cafés.

The coupons are accepted at the blue-colored buildings on this map. Not only is there sushi, tempura, and ramen, but you can likely also find foods from your own country.

Marunouchi Area Map for ICN2022 participants 



Copyright © MITSUBISHI ESTATE Co., Ltd. All Rights Reserved.

Marunouchi Ambassadors are hospitality helpers

For the three days from December 7 to 9, Marunouchi Ambassadors wearing red vests will be stationed along Marunouchi Naka-dori Street and other locations, standing by ready to help at lunchtime. The Marunouchi Ambassadors are employees of local companies.

Please don't hesitate to ask them about restaurant recommendations, how to get to shops, or other information. Talk to them and you just might get something in return!



■ What's happening in Marunouchi



Marunouchi Street Park and illumination

Marunouchi Naka-dori Street has been turned into a community open space for pedestrians to enjoy festive mood limitedly for 27 days. Along the 1.2km street will be decorated with an impressive 1.2 million gold LEDs, creating an elegant atmosphere. You can also enjoy shopping at boutique stores and limited event food trucks and market shops. If you walk to Gyoko-dori Ave., which is between Tokyo Sta. and The Imperial Palace, you'll see a skating rink collaborated with a luxury brand!

● Website

<https://marunouchi-streetpark.com/en/>

■ Recommendations for 22nd IUNS-ICN participants



The East Gardens of the Imperial Palace

Did you know it's free to enter the East Gardens of the Imperial Palace? There you'll find such an abundance of nature that you won't believe you're in the middle of the city. You can also see the foundation of the former castle tower of Edo Castle on palace grounds, and swans that live in the moat.

<https://www.japan-guide.com/e/e3018.html>



Museography © UMUT works

INTERMEDIATHEQUE

This museum is located on JP Tower's 2nd floor. Scientific specimens from the University of Tokyo are among the many exhibitions. Admission is free.

<https://tokyo-marunouchi.jp/en/facilities/1633>



IPPODO TEA

This Japanese tea shop faces Marunouchi Naka-dori Street. Takeout is also available. Japanese tea is very good for your health!



SKY BUS

This is the famous red, double-decker bus. You can take a bus tour from the departure point in Marunouchi. The scenery visible from seats on the second level is the best.

<https://tokyo-marunouchi.jp/en/experiences/2377>



Museums and public art

Within walking distance you'll find Mitsubishi Ichigokan Museum, Idemitsu Museum of Arts, and plenty of public art accenting the streetscape.



Photo spots

To take great photos of the Tokyo Station building, we recommend

- 1) Gyoko-dori Ave.,
- 2) the 6th-floor rooftop garden at JP Tower,
- 3) and the open-air terrace at marunouchi HOUSE.

The view is amazing at night as well as during the day!



Restaurants with beautiful night views

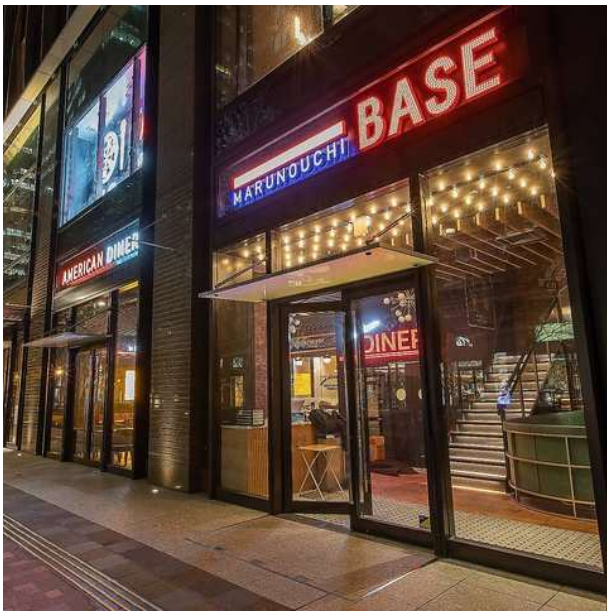
If you have time, why not check out the cluster of high-end restaurants on the 35th and 36th floors of the Marunouchi Bldg., or the open-air terrace at marunouchi HOUSE on the 7th floor of the Shin-Marunouchi Bldg.?

In addition to savoring wonderful foods, you can also appreciate magnificent night views of high-rise buildings and the Tokyo Station building.



Cocktails made with Japanese sake

There are many bars in Marunouchi. Some hotel bars serve cocktails made with Japanese sake. The photo is of the Tokky Martini, an original cocktail served at PETER on the 24th floor of The Peninsula Tokyo.



KARAOKE

When you visit Japan, you should try karaoke. At Marunouchi BASE, you can have fun late into the night singing karaoke using the latest equipment. 🎤

<https://www.marunouchi.com/tenants/10198/index.html>

Useful Information



JNTO TIC

This comprehensive tourist information center caters to foreign visitors. Though tickets are not available here, you'll find information on sightseeing and souvenirs throughout Japan.

<https://www.marunouchi.com/tenants/9511/>



Tokyo City i

This comprehensive tourist information center is located on basement level 1 of the JP Tower. It offers tourist information, including tickets, as well as charging for electronic devices (charging fees apply).

<https://en.tokyocity-i.jp/>



Exchangers

This currency exchange shop is just a 3-min. walk from Tokyo International Forum.

<https://www.exchangers.co.jp/en/location/jp.php>



Supermarkets and convenience stores

There are several supermarkets and convenience stores in Marunouchi.

Find out more at [_](#)

<https://www.marunouchi.com/tenants/4009/>

We share other information on the area on these social media platforms!

☑Facebook <https://www.facebook.com/DMOTOKYOMarunouchi.japan>

☑Instagram @dmo_tokyo_marunouchi